



COMMUNITY HEALTH INFORMATION EDUCATION FORUM

CHIEF ORGANIZATION BACKGROUND/PROFILE

Community Health Information Education Forum (CHIEF) a non-governmental organization was founded and incorporated on the 4th of August 1998 with registration number RC: 11,364.

CHIEF NGO, is community based health development oriented which over years extended coverage to all five divisions and 14 LGAs of Lagos and one LGA in Ogun States.

CHIEF mission is to bring Health Information Education Communication and Primary Health Care [PHC] services to Individuals, Families, and Communities through their involvement, and offer alternatives to harmful Socio-cultural practices affecting Health.

CHIEF vision is to promote grassroots health development, communication and care, thereby reduce morbidity and mortality in community settings.

OBJECTIVES

- Conduct baseline studies [community diagnosis] to identify Health and felt needs of stakeholders
- Provide Reproductive health /Adolescent /MNCH health services and rights
- Provide PHC services and Essential Drugs.
- Develop and produce Behavioural Change Communication (BCC) Materials i.e. Posters, Handouts , drama, radio jingles etc
- Raise Awareness on STI/HIV&AIDS, OVC, TB, Malaria, Breast and Cervical cancer and other non communicable diseases promoting Home Based Care (HBC)
- Reduce morbidity and mortality among the vulnerable groups
- Collaborate with local and international organizations or Agencies promoting health

SERVICES PROVIDED

- Baseline/Formative research
- Primary Health Care
- Maternal New born Child Health (MNCH) e.g. Safe-motherhood, Child-Spacing, Gender Issues
- Adolescent health development

- Communicable/Non-communicable disease prevention control e.g. STI/HIV/AIDS, Malaria, TB, Breast and Cervical cancer
- Empowerment programs e.g. trainings, micro-finance, social welfare

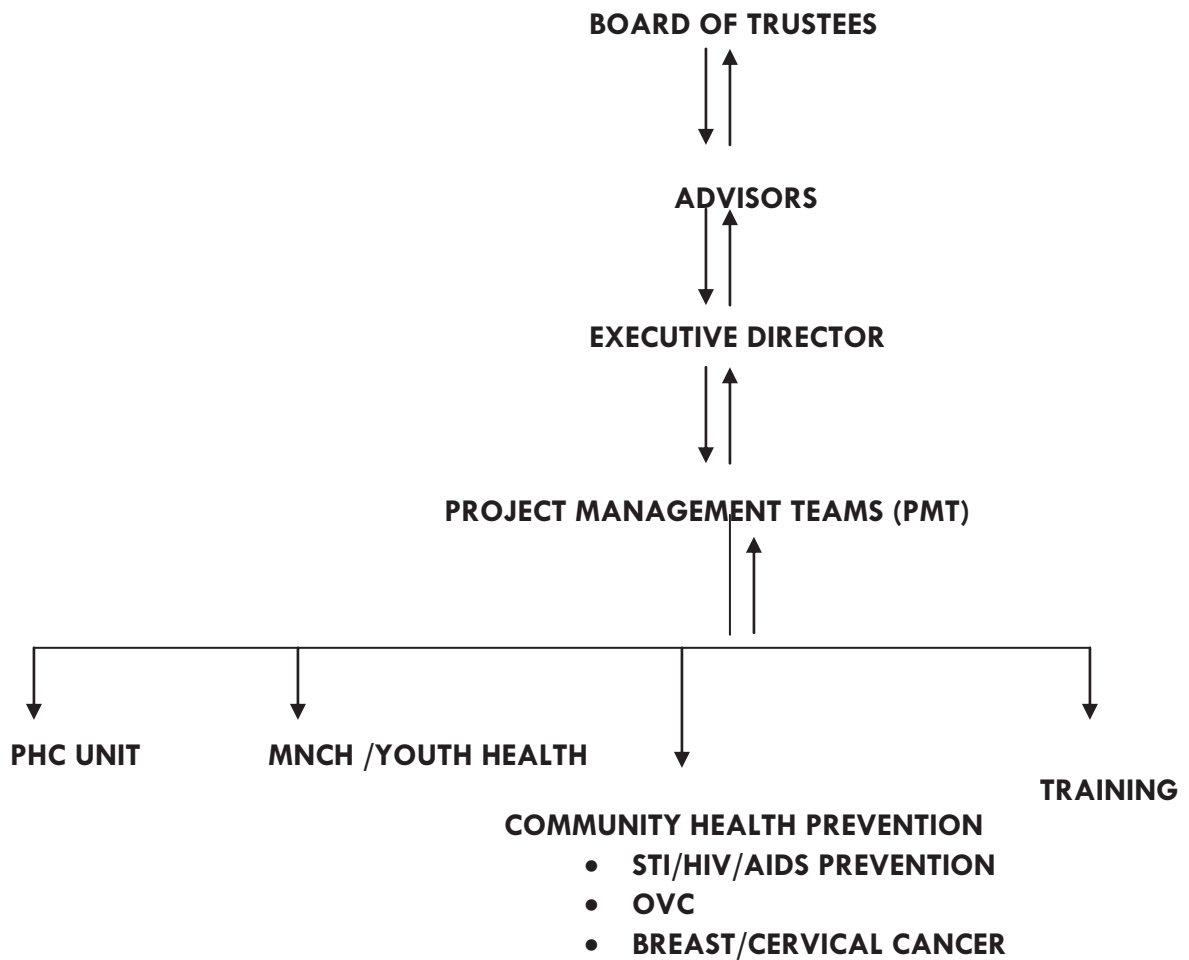
PAST AND PRESENT ACCOMPLISHMENTS

- I. Primary Health Clinics (1998-up-to-date)
- II. Lagos State/UNDP supported short-term integrated rural health development project in five LGAs of Lagos (2001-2002)
- III. Van-leer container PLC (2001) – Short-term workplace AIDS prevention project
- IV. Lagos State AIDS Foundation (LSHAF) - Short-term AIDS campaign rallies and football matches under APIN and UNICEF supported programs (2001-2002)
- V. USAID/Family Health International (FHI) Nigeria/USAID (2001-2003) supported AIDS prevention project among out-of-school-youths. The project covered Ojo, Ajeromi-Ifelodun and Lagos-Mainland LGAs of Lagos State
- VI. National AIDS Control Agency (NACA)/World Bank supported scale-up AIDS prevention project among disadvantaged women and out-of-school-youths, covers two neighboring states, Lagos and Ogun, Eti-Osa, Ibeju-Lekki and Sagamu. (2004-2005)
- VII. Lagos-State AIDS Control Agency (LSACA)/World Bank supported scale-up project STI/HIV/AIDS prevention project among out-of-school-youth in five divisions (IBILE) of Lagos State (2005, One year program)
- VIII. Centre for Development of Population Activities (CEDPA/USAID) supported project on Safe-Motherhood (Birth and Emergency Obstetric Preparedness) (2005-2007)
- IX. GHAIN/USAID supported scale-up project STI/HIV/AIDS prevention among out-of-school-youths in Ojo, Ajeromi-Ifelodun and Lagos-Mainland LGAs, Lagos State. (2004-2006)
- X. COMPASS/USAID supported Women's Health Promotion project (October 2005-April 2006)
- XI. COMPASS/USAID supported Male involvement in child-spacing project (May-December 2006)

- XII. COMPASS/USAID supported Immunization and Exclusive Breast-Feeding project, 10 communities of Ibeju-Lekki LGA, Lagos State, (January 2007-May 2009)
- XIII. CHIEF OVC project in 12 communities of Ibeju-Lekki and Gbara community in Eti-Osa West LCDA (2008-on-going)
- XIV. CHIEF Malaria prevention project in 12 communities of Ibeju-Lekki LGA and Gbara community, Eti-Osa LCDA
- XV. COMPASS/USAID supported OVC activity on stigma reduction among OVC adopting sesame street Kami and the big bird video (2009)
- XVI. ROTARY Club water borehole provision at Oke-Irakekere community, Eti-Osa East LCDA (2009)
- XVII. Y-CARE/USAID supported project on peer based abstinence and be faithful HIV prevention interventions among disadvantaged rural girls, women, and partners in 10 local communities of Ibeju-Lekki LGA (May-December 2009)
- XVIII. Ministry of Women Affairs/CASSAD supported project on psycho-social support of OVC (on-going)
- XIX. American Cancer Society (ACS)/ORACLE supported project on awareness creation, early detection and treatment of breast and cervical cancer among disadvantaged rural women in 10 communities of Ibeju-Lekki and Agbowo community of Ikosi-Ejinrin LCDA, Lagos State
- XX. NIBUCAA/NACA supported workplace AIDS prevention project 2010 (on-going)
- XXI. LSACA/HAF rapid response initiative to support psycho-social support of Orphans and Vulnerable Children (OVC) in 10 communities of Ibeju-Lekki LGA, Lagos State (On-going)

CHIEF since establishment trained 2,000 Peer Educators and reached 5,000,000 stakeholders

COMMUNITY HEALTH INFORMATION EDUCATION FORUM (CHIEF) ORGANIZATIONAL CHART



Board of Trustees

Erelu Ojuolape Ojora – Grand patron

Mrs. Aderemilekun Ayoka Akinmade, Founder/Executive Director

Mrs. Anna Olajumoke Lawuyi

Chief (Mrs.) Rose Olunwa

Mrs. Fibi Gwom

Chief E.O. Akinmade

Current Management Team

1. Mrs. Aderemilekun Ayoka Akinmade, MCommH, Diplomas Public, Community Health, RN, RM – Executive/Project Director
2. Mrs. Helen Tabita-Egeregor – Diplomas Public, Community Health, RN, RM - Program Officer
3. Mrs. Patience Ubah – OND, Business studies- Asst. PO/Administrative/Accounts officer
4. Mr. Saheed Mabadeje – WASC (Undergraduate) -Youth Coordinator
5. Mr. Idowu Anibaba – WASC (undergraduate) Youth Coordinator

2009 Volunteers

International

1. Sebastian Lindstrom
2. Evan Fowler
3. Hiroyasu Yumoto
4. Caroline Biggert
5. Nong Shuk Ting
6. Mrs. Aralola Akerstrom
7. Dami Akinmade, PHD

Local

1. Ms. Temitope Akinmade, MBA
2. Mrs. Roseline kanu-Udeh, MSc, BSC
3. Rasheed Ademuyiwa, BSC accounting
4. Mrs. Bisi Ebiti, Diplomas Public, Community Health, RN, RM
5. Mrs. Anna Olajumoke Lawuyi, RN, RM
6. Teresa Osemeke, trained peer educator
7. Mr. Juwom Ibiyemi, trained peer educator
8. Mrs. Lara Olanrewaju, trained peer educator
9. Mrs. Esther Kokoroaiye, trained peer educator

2, 000 trained volunteers/lay counsellors

Project Partners/Collaborators

Organizations

COMPASS/USAID

CASSAD

YWCA/USAID

Rotary Club

American Cancer Society (ACS)/ORACLE

Ministry of Women Affairs

Ministry of Justice (Directorate of Citizen's rights)

National Coalition on Women and AIDS (NAWOCCA Lagos Chapter)

LSACA

What took you so long (International)

Chief E.O. Akinmade

Urban Akerstrom

Other Individuals

CAPACITY OF CHIEF PMT

CHIEF Project management Team (PMT) received capacity building in the following areas:

- Non-Governmental Organization management
- Accounting / Financial management
- Communication process
- Counseling
- BCC design, field -testing and production
- STI/HIV/AIDS
- Leadership training in Safe-motherhood,
- Capacity building for youth organization
- Proposal development workshops.
- Management and coordination of decentralized HIV/AIDS response
- Workplace AIDS prevention
- Safe-Motherhood
- Breast and Cervical Cancers

CHIEF PUBLICATION LIST

- Project reports
- Health FIRST journal
- Production of BCC materials:

C.H.I.E.F NETWORKS AND COLLABORATIONS

C.H.I.E.F. does lots of Networking and multi-sectoral collaboration:

- Nigerian Network of Non Governmental Organization [NNNGO]
- Global Health Council, Washington
- World Association of Non Governmental Organization [WANGO]
- Christian Connection for International Health [CCIH]
- Civil Society of Group on HIV&AIDS in Nigeria [CISGHAN]
- Family Health International [FHI Nigeria]/USAID
- Centre for Development and Population Activities (CEDPA)
- Lagos State AIDS Control Agency [LSACA]
- Local Action Committee on AIDS
- Lagos State Safe- Motherhood Committee
- Lagos State Roll Back malaria
- CEDPA
- COMPASS
- Young Women Christian Organization [YMCA] Eti-Osa Branch
- Market Women Association Eti-Osa Branch
- National Union of Road Transport Workers Eti-Osa Branch
- Indigenous Youths/ Women Associations

OTHER SERVICES PROVIDED BY CHIEF

- Resource centre / consultancy / Research

- Business Centre
- Counselling

RECEIVED AWARDS

- The Waterside Annual Human Development (2004)
- Appreciation Award by Rotary Club of VGC (2006)
- PSR Development in Nigeria Merit Award (2006)
- Foremost Achievers Award, St. Peters Church, Ikota (2007)
- Appreciation Award by Sagamu Community Life centre (2007)
- Queens Lion Club Ikate-Elegushi (2009)

MAIN OFFICE

**COMPLEX 6, BAIYETINLO COURT GBARA COMMUNITY, OFF LAGOS/EPE EXPRESSWAY,
LEKKI PENINSULA LAGOS**

TEL: 773995

E- MAIL: chiefngo@yahoo.com

WEBSITE: <http://www.chiefngo.org>

CONTACT PERSON

MRS REMI AKINMADE

Executive/Project Director

TEL: 08023014365/ 08034471160